



# OSHPD Preapproval of Anchorage (OPA)

**Pre-approval** of anchorage and seismic bracing by OSHPD is a **voluntary** program for Manufacturers, Designers, and Suppliers of Equipment Anchorage!

Office of  
Statewide Health Planning and Development 

Facilities Development Division  
The Building Department for California's Hospitals



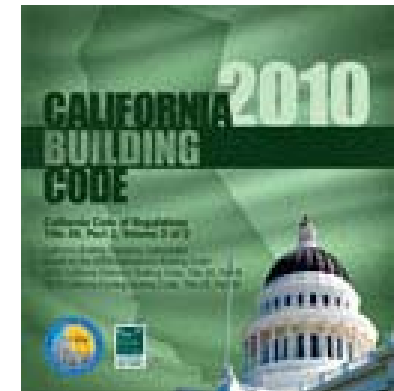
## Scope of OSHPD Preapproval of Anchorage (OPA)

- OSHPD Preapproval of Anchorage (OPA) is limited to:
  - Seismic design of supports and attachments for nonstructural components, and
  - Seismic bracing of distribution systems.
- OPA is **NOT** a product/components approval program!



## Basis of OSHPD Preapproval of Anchorage (OPA)

- OSHPD Preapproval of Anchorage (OPA) is based on:
  - California Health and Safety Code Section 129895.
  - Manufacturer's certification provisions of the CBC 2010 Sections 1708A.1.3 and 1708A.4.2.
  - Manufacturer's certification provisions of ASCE 7-05 Section 13.2.1.2.



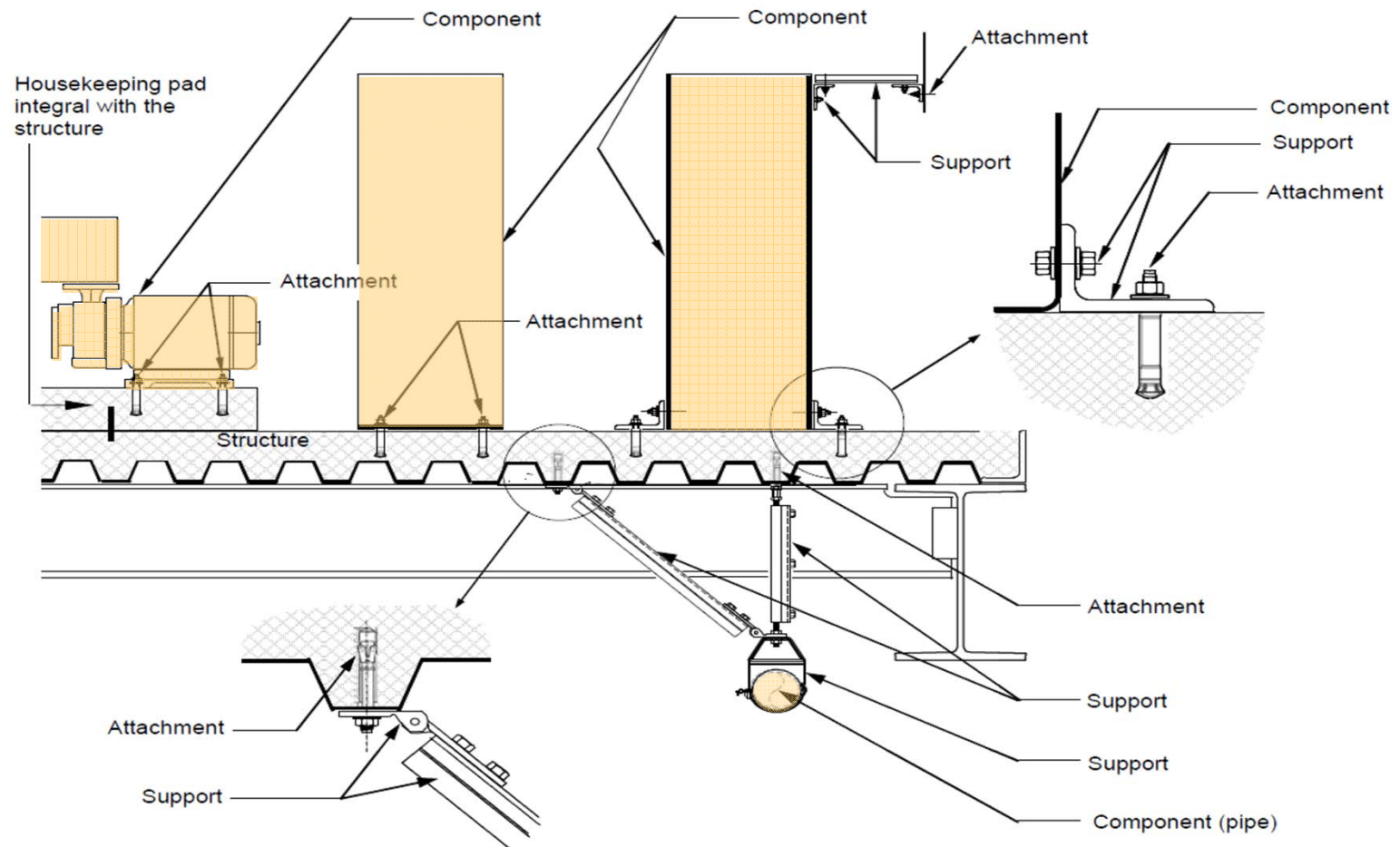


## Minimum Requirements for OPA

- Design in accordance with the CBC 2010,  
and/or
- Testing in accordance with the CBC 2010.



# What are Components, Supports, and Attachments?





## Do the Supports/Attachments Design need to Comply with the CBC 2010?

- **Yes!**

- Demand and capacity shall be based on the CBC 2010.



## OPA Submittal Requirements

1. Completed application with appropriate signature attached shall be **submitted electronically (preferably by e-mail)**.
2. Application filing fee of \$250.00 payable to “OSHPD”.
  - Review fee will be charged to the applicant for actual cost based on current hourly billing rates **in addition to the filing fee.**
  - Application filing, review, and renewal fees are **non-refundable.**
3. Supporting documents, test reports, drawings, product catalog, and calculations for review shall be **submitted electronically (preferably by e-mail)**. Preferred document size is 8-1/2x11. Maximum paper size is 17x22.



## OSHPD Contact for Additional Information about OPA

M. R. Karim

Ph. 916-440-8410

E-mail: [OPA@oshpd.ca.gov](mailto:OPA@oshpd.ca.gov)

### **Mailing Address:**

Office of Statewide Health Planning and Development (OSHPD)

Facilities Development Division

Attn.: M. R. Karim

Supervisor, Structural Support Unit

400 R. Street # 200

Sacramento, CA 95811



## How Much Change can be Made Before OPA Becomes Invalid?

*OPA will be nullified when:*

- ❖ *Design, construction, or quality control/quality assurance methods are **materially altered** as defined in the CAC 2010 Section 7-111.*

**OR**

- ❖ *Strength, Stiffness, Size, Weight, or Materials are altered so that they are no longer equivalent to what was approved in the OPA.*



## Where Do I Find a Current List of OPAs and OPA Application Form?

- OSHPD website:

<http://www.oshpd.ca.gov/FDD/Pre-Approval/index.html>



## Can I Use the CBC 2001 and 2007 OPA's for the CBC 2010 Projects?

- **Yes!**
  - ❖ Provided the Structural Engineer of Record submits to OSHPD calculations for seismic demand, capacity, and demand/capacity ratio for anchors, shot pins, and other attachments in accordance with the CBC 2010.
  
- **Approved supports and bracing are accepted without further review.**



## Can we Use the CBC 2010 OPAs for the CBC 2007 Projects?

- **Yes!**
  - ❖ Provided the Structural Engineer of Record submits to OSHPD calculations for seismic demand and demand/capacity ratio for anchors, shot pins, and other attachments in accordance with the CBC 2007.
- **Approved supports, attachments (anchorage capacity), and bracing are accepted without further review.**



## Can we Mix and Match Different Distribution Systems OPA?

- **No!**
  - ❖ Different distribution systems OPA should not be used for **a given run** of pipes, ducts, or conduits.
- Different distribution systems OPA are permitted on different run of pipes, ducts, or conduits for the same project.



## Can we Substitute Components in an OPA?

- **No!**

- ❖ Substitution of components in an OPA is not permitted, unless they are reviewed and approved by OSHPD for specific application.



## Do we Need to Submit Anything to OSHPD for Review when OPA's are Used?

- **Yes!** OSHPD review is required:
  - To ensure that the appropriate detail has been selected/applied for each condition and for the actual substrate that it will be connected/attached to.
  - To ensure that supporting structure that are not part of the OPA's have adequate capacity.
  - For anchorage/bracing details and supporting calculations that are not part of a pre-approved system. Many OPA's require the SEOR to design certain elements in the load path.
  - **OSHPD will not re-review what is already approved in the OPA, if it was approved for the code for which it is being used.**



## Can we Consider Seismic Bracing/Attachments in Accordance with NFPA 13-10 Equivalent to an OPA?

- **No!**
  - The CBC 2010 Sections 1613A.6.3 and 1615A.1.22 require that allowable values for Automatic Sprinkler Systems concrete anchors, hangers, and bracing be designed on the basis of material chapters of the CBC 2010 in lieu of NFPA 13-10.
  - Chapter 35 of the CBC 2010 amended certain sections of the NFPA 13-10.



## How Long will it take for OSHPD to review the Equipment Anchorage Pre-Approval?

- **OSHPD has a 80/40/40 Goal for Equipment Anchorage OPA (DON'T Apply to Distribution Systems Seismic Bracing OPA)!**
  - New OPA Application Submittal shall be Reviewed within 80 days.
  - Response to Back Checks for OSHPD Comments will be Reviewed within 40 days.
  - Renewal Request for OPA (within the same code cycle) shall be Reviewed within 40 days.



## How Long will it take for OSHPD to review a Distribution Systems Seismic Bracing OPA?

- **Depends on the Scope & Quality of Submittal!**
  - Distribution systems seismic bracing OPA review can take any where from 6-months to a year.
  - Depends largely on the scope of the OPA, quality of submittal, and responsiveness of the OPA Owner.
  - Renewal of distribution system OPA approved under the CBC 2010 takes less time.



## Can I Get a Copy of OPA Documents from OSHPD?

- **No!**
  - OSHPD currently does not distribute OPA documents.
  - Manufacturers holding the OPA normally distributes them.



## Can I Get an OPA for Components Exempt by the CBC 2010 Sections 1615A.1.12 or 105.2?

- **Yes!**
  - OSHPD **does not recommend** OPA's for small components exempt from plan review by the CBC 2010 Sections 1615A.1.12 or 105.2.
  - Exemptions from *permit* requirements by the CBC 2010 shall not be deemed to grant authorization for any work to be done in any manner in violation of the provisions of the code or any other laws or ordinances.



## Can I Get an OPA for Vibration Isolators, Roof Curbs, or Concrete Anchors?

- **No!**
  - OPA is **NOT** a product approval program, hence can't approve Vibration Isolators, Roof Curbs, or Concrete Anchors, unless they are part of an equipment anchorage or distribution system bracing.



# Test Facility Requirements

- **Testing laboratory shall have ISO 17025 accreditation,**

or

- Testing shall be under the responsible charge of an independent California Licensed engineer.